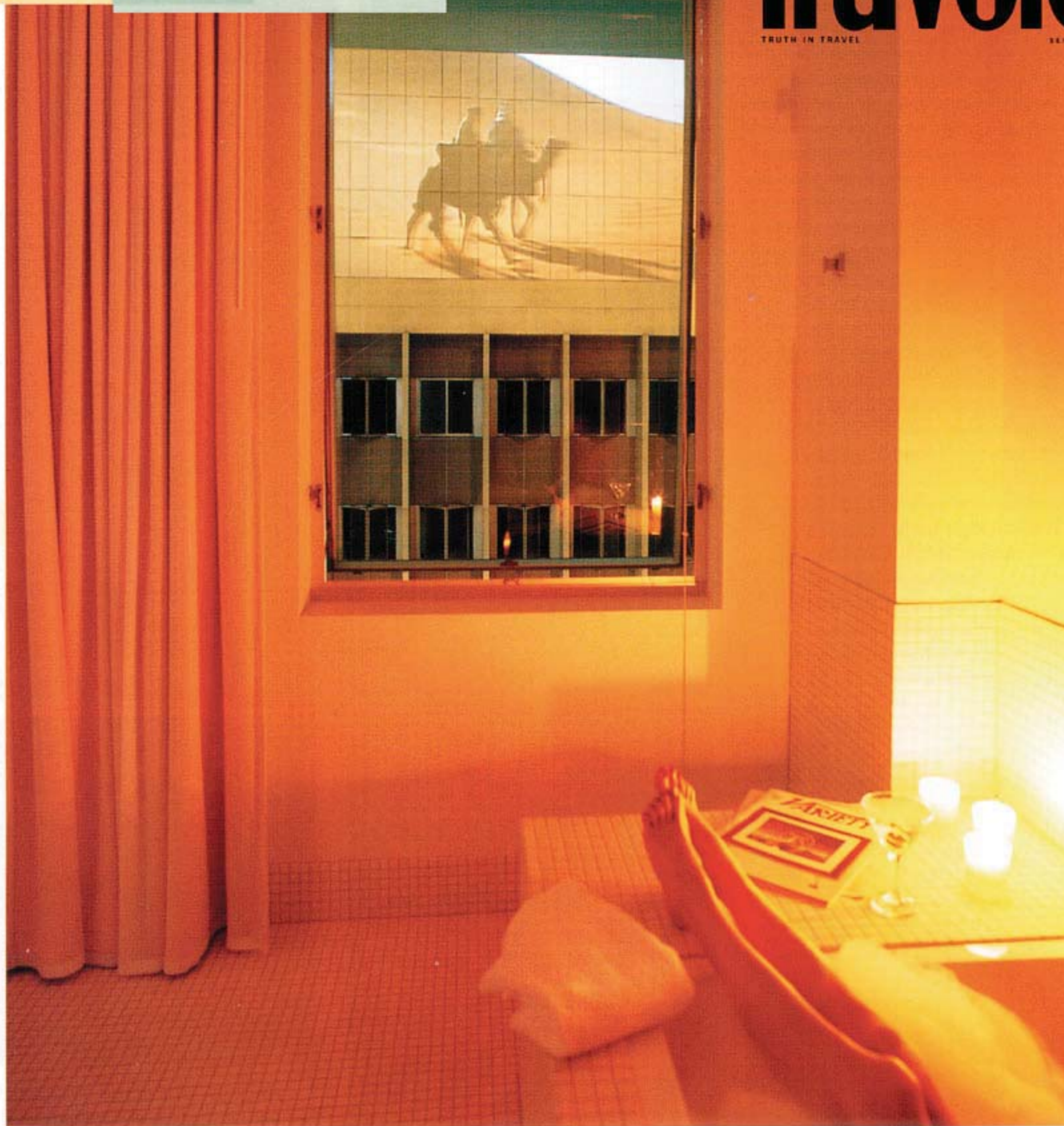


room with a view

Condé Nast  
**Traveler**  
TRUTH IN TRAVEL  
SEPTEMBER 2002



Los Angeles

## Standard Downtown

Big Penthouse, Standard Downtown, 550 South Flower Street, Los Angeles, California 90071; 213-892-8080; [standardhotel.com](http://standardhotel.com). There are 207 rooms; doubles range from \$95 to \$325. The Big Penthouse, a suite, is \$450.

**T**HE VISION OUT YOUR WINDOW IS NO MIRAGE. THAT'S PETER O'Toole (a.k.a. Lawrence of Arabia) trekking across you-know-where, companion in tow, in David Lean's 1962 classic. And, naturally, you're soaking up this desert drama from the bubbly tub of your penthouse at Los Angeles's new Standard Downtown. Every night, films are projected onto a neighboring high-rise, which becomes the hotel's own celluloid canvas. (A decidedly more public viewing can be enjoyed one floor up, at the rooftop bar, where revelers enjoy the evening's movie pick against a backdrop of the city skyline.) In addition to screening Hollywood favorites, the hotel has plans for film festivals with delightfully esoteric themes: experimental, Italian neorealist, French New Wave, and—for the truly *précieux*—silent. High atop the Standard Downtown, God(ard)-worshipping cinecasts will surely feel a little closer to the stars. □

Jeff Oshiro

**The Standard**  
Downtown LA

550 South Flower at 6th Street Los Angeles Ca 90071 T 213 892 8080 F 213 892 8686 [www.standardhotel.com](http://www.standardhotel.com)